

SKATEBOARD DETERRENTS

Installation of our skateboard deterrents eliminates potential damage to property and architecture whilst reducing the possible liability for property owners who may be held responsible for injuries.

Manufactured from 316 grade stainless steel.

Suggested spacing is 500-600mm between studs.
Use Hilti 500 epoxy system for installing into concrete substrates.

BENEFITS:

- Eliminate damage to property and architecture
- Stainless Steel 316 for aesthetics and durability
- Can be fitted to variety of surfaces



Mushroom Knobs



20mm dia head
10mm above ground
30 x 60mm stem

CODE	DESCRIPTION
12-SDM	Skateboard Deterrent - Mushroom Knob
12-SDM-T	Skateboard Deterrent - Mushroom Threaded Knob
12-SDC	Skateboard Deterrent - Cylindrical Knob
12-SDSF	Skateboard Deterrent - Square Faced
12-SDBN	Skateboard Deterrent - Bull Nosed
49-HE500	Hilti 500 Epoxy

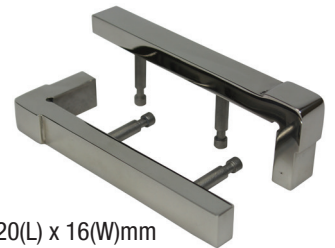
Quantity: 10 per pack
Stems: 6mm

Mushroom Threaded (For use on timber)



20mm dia head
10mm above ground
38 x 60mm stem

Square Faced Edge Nosing



120(L) x 16(W)mm
10mm above ground
30 x 60mm stem

Cylindrical Knobs



20mm dia head
10mm above ground
30 x 60mm stem

Bull Nosed Edge Nosing



120(L) x 16(W)mm
7.5mm above ground
30 x 60mm stem