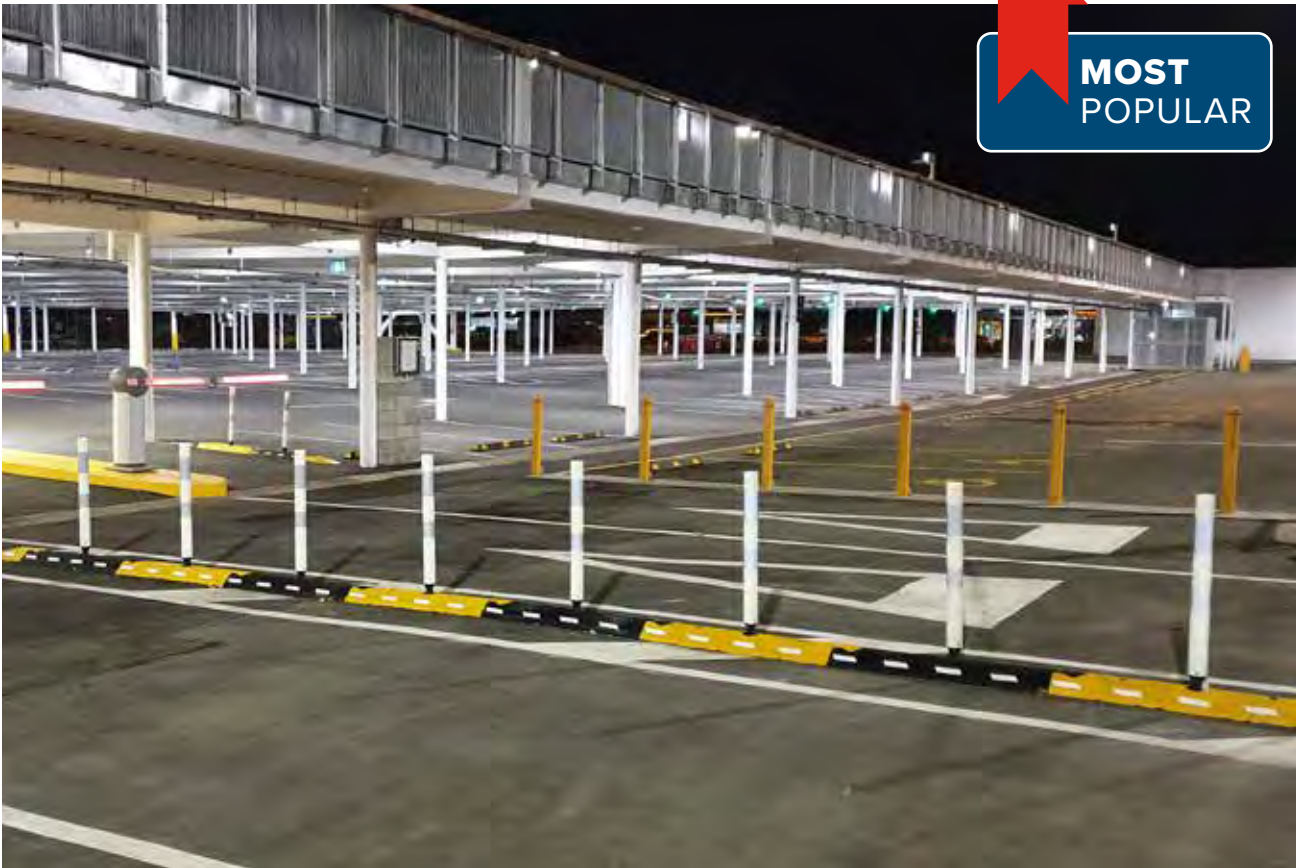


Flexible Traffic Separators

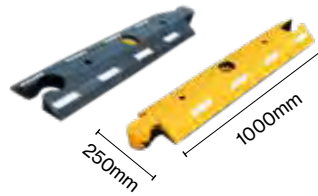


**MOST
POPULAR**

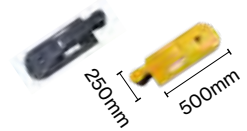
Flexible Traffic Separators

This robust interlocking system, dubbed 'the traffic snake,' is used to separate lanes and traffic on and off road. It is also used to create safe pedestrian walkways on sites where forklifts and trucks are present on a regular basis.

- Reflective posts have a twist-lock system allowing easy installation and replacement
- Can be permanently fixed, or loose laid for temporary situations
- Post caps also available
- Asphalt and concrete fasteners available upon request



Centre Module - Black or Yellow



End Cap - Black or Yellow



Flexi Post - Orange or White



Flexi Panel

CODE	DESCRIPTION	SIZE (mm)
49-TSM-B	Centre Module - Black	1000(L) x 250(W) x 80(H)
49-TSM-Y	Centre Module - Yellow	1000(L) x 250(W) x 80(H)
49-TSE-B	End Cap - Black	500(L) x 250(W) x 80(H)
49-TSE-Y	End Cap - Yellow	500(L) x 250(W) x 80(H)
49-TSPL	Flexi Panel	750(H) x 150(W)
49-TSP	Flexi Post (Orange or White)	900(H) x 70(D)
49-FR12	Fasteners - Bitumen M12 x 300 Spike	
49-CF12150	Fasteners - Concrete M12 x 150mm Concrete Screw	

Fasteners available for bitumen and concrete.