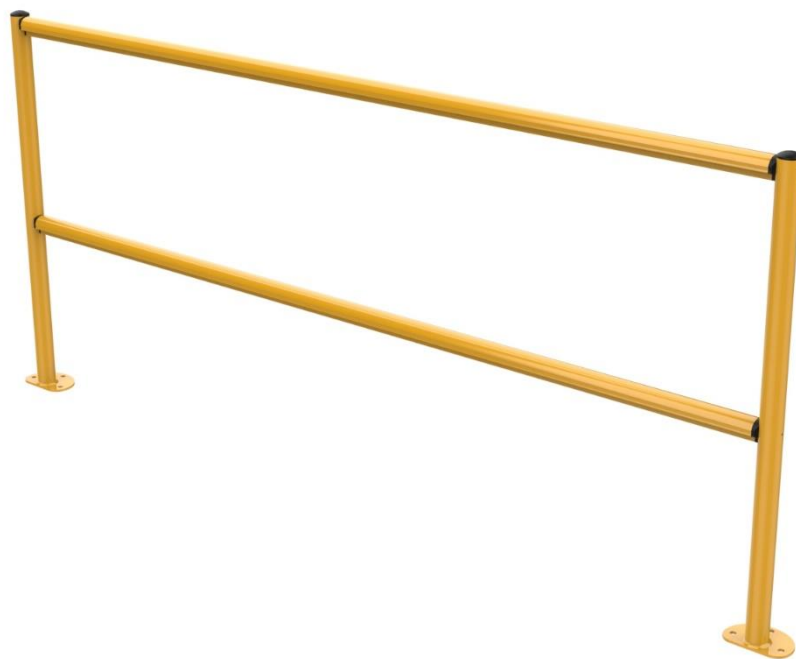


TRU-GARD™

HAND RAIL SYSTEM

INSTALLATION & OWNERS MANUAL



Tru-Gard™ making workplaces safer



- When receiving goods on site, please check all packages immediately for damage or repackaged goods that may have been damaged during shipping.
- Any damage must be reported to Tru-Bilt Industries Ltd within 24 hours of receiving product.

TRU-BILT®
INDUSTRIES

New Zealand: 0800 144 999

Australia: 1800 144 888

Website: www.tru-gard.com



Contents

Safety Warnings 3

Installation Tools and Notes 4

Installation Instructions 5-7

Related Products 8

Warranty 9

Preface

- The installation of Tru-Gard™ Hand Rail System is a simple process. This manual must be followed carefully for optimal results.
- A selection of hand and power tools will be required depending on the type of fixing available.
- Tru-Bilt Industries Ltd reserves the right to change product design and specifications without notice.

Installation Tools and Notes

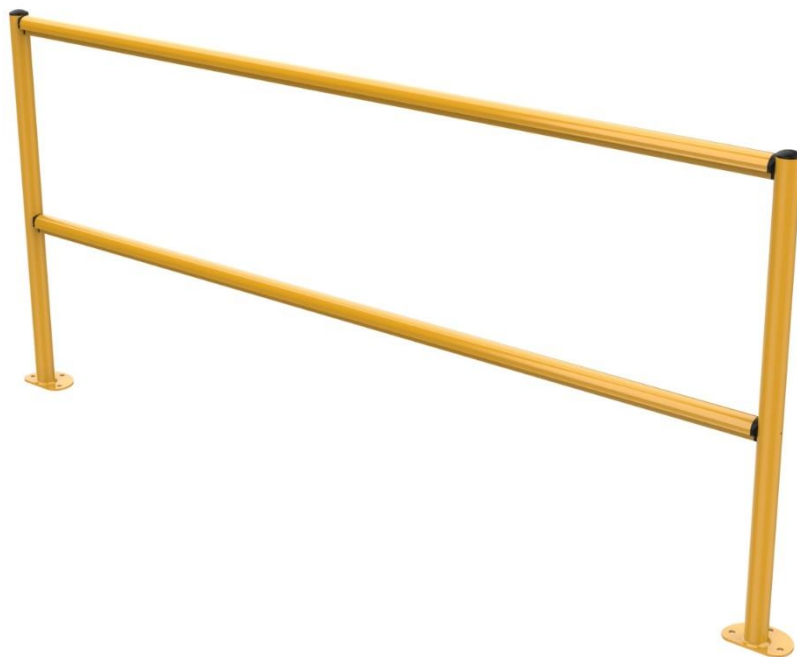
Tru-Gard™ Hand Rail must be installed as per the following instructions to ensure the system will be effective to its full potential.

Each hand rail support post must be bolted to the concrete with 3 x 10mm x 60mm galvanised screw anchors, as supplied.

The maximum space between support posts is 2.2m (centre to centre)

The rail must be securely attached to the rail plugs on the support posts.

See full installation instructions on pages 5-7 for certified installation.



Installation Instructions

Step 1

- Use a string line or straight edge to mark the front edge of posts. The straight edge of the base plate (with no fixing holes) lines up to the edge of the walking area. Start at a corner or end-of-run first, and work your way along, one bay at a time.



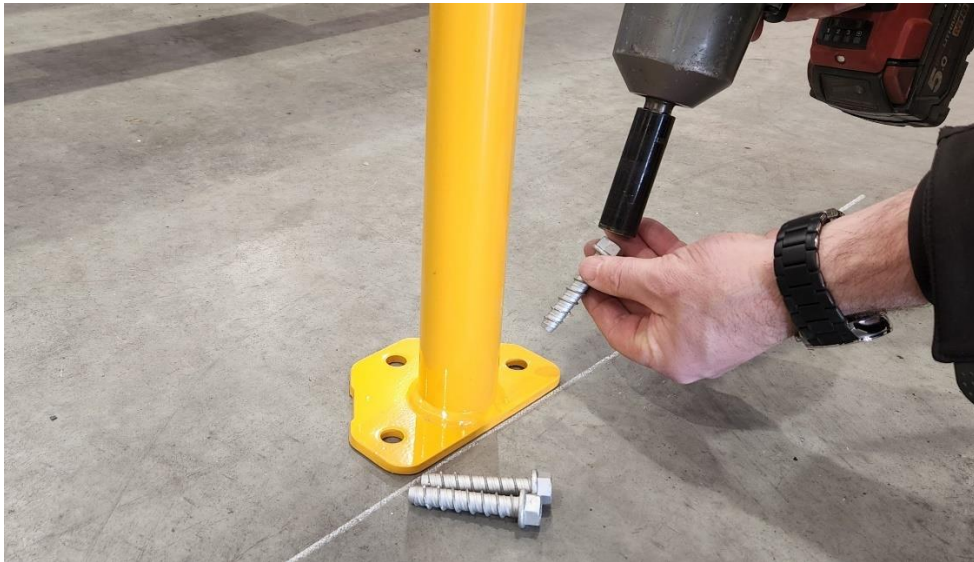
Step 2

- Fix black rail plugs to the posts using the supplied tek screws. Be careful not to strip the screw. The posts are pre-drilled at the correct height for straight runs.



Step 3

- Fasten the first post to the ground, using shims if needed, to ensure the post is vertical. Use 3 x 10mm x 60mm screw bolts as supplied. Check the torque setting on your drill is NOT set on high.



Step 4

- Push the rails onto the plugs of the post, ensuring they are pushed all the way on. Secure them in place 20mm-30mm from the end with the small button-head screw supplied. Note: every rail must have one small button-head screw at each end.



Step 5

- Push the rails onto the black plugs of the second post before fastening it to the ground.



Step 6

- Repeat the process until the hand rail is complete to the final post.

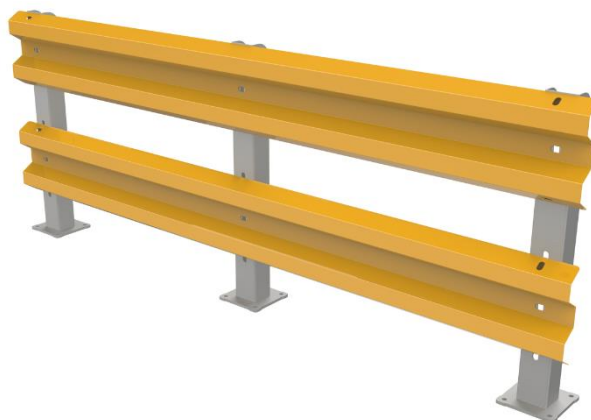


Related Products

Tru-Gard™ Certified Barrier

Tru-Gard™ is a certified barrier system, ideal for traffic management programs and providing protection against forklift damage to buildings and assets, and exceptional safety for personnel.

See our separate instruction manual for the installation of the Tru-Gard™ Certified Barrier.



Tru-Gard™ Personnel Gate

Allow pedestrian access through the barrier or hand rail system whilst ensuring their personal safety with the Tru-Gard™ Personnel Gate.

See our separate instruction manual for the installation of the Tru-Gard™ Personnel Gate.





10-Year Warranty

Tru-Bilt Industries Ltd warrants that your Tru-Gard™ Hand Rail System will be free from defects in materials and workmanship under normal use for a period of **ten years**, provided the purchaser installs, maintains and operates the Hand Rail System in accordance with this owner's manual. If a warranty issue should arise, a Warranty Claim Form is available from Tru-Bilt and must be completed. Photos are also required to support the claim. Travelling costs and labour are not claimable.

When a warranty claim is accepted, Tru-Bilt will repair or replace parts, or complete products, whichever Tru-Bilt Industries Ltd deems suitable. Tru-Bilt Industries Ltd retains the right to reject any warranty claim for failure or damage caused by improper use or abuse.

TRU-BILT®
INDUSTRIES

New Zealand: 0800 144 999

Australia: 1800 144 888

Website: www.tru-gard.com

August 2022



Tru-Gard™ making workplaces safer