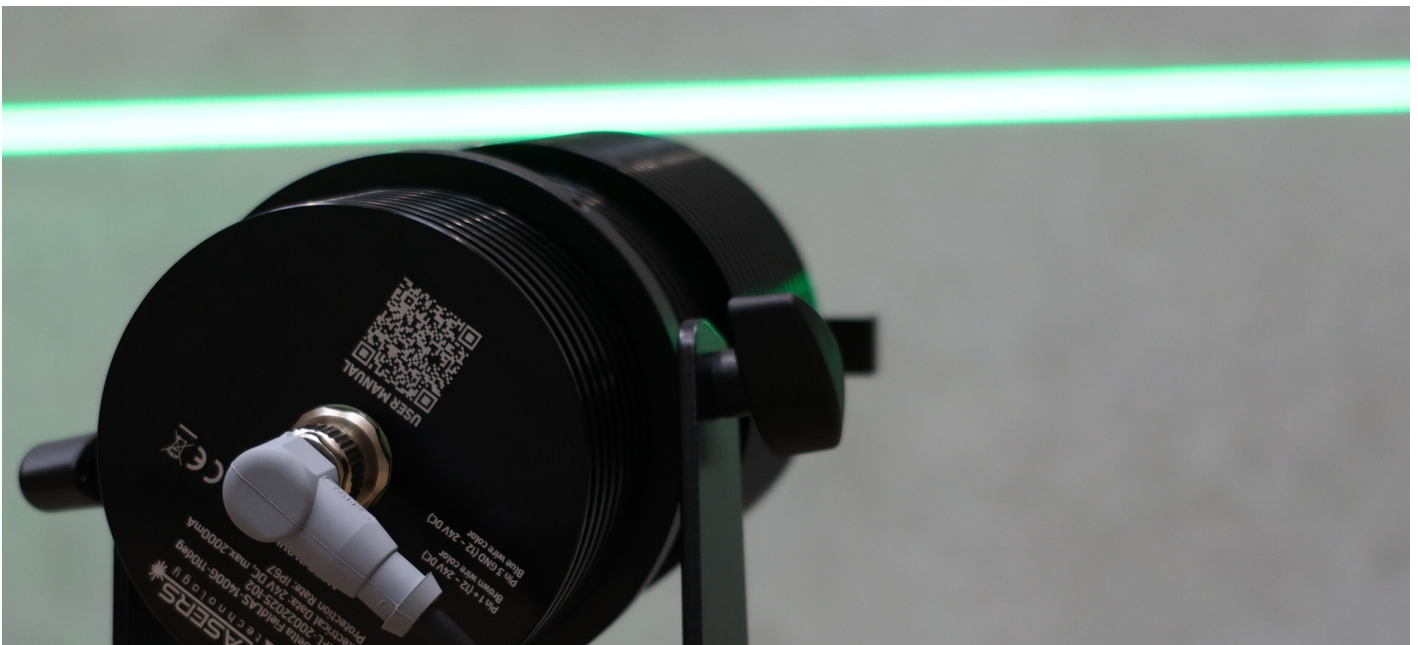


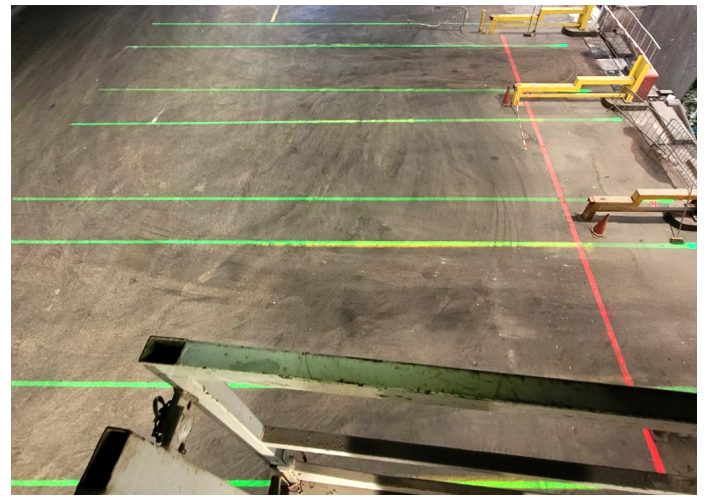
# HaloPath Laser Line Projector.

Safer, Smarter Industrial Line Marking Solution



PRODUCT GUIDE

49-HPLL



### Key Features.

#### Highly Visible Line Projection

Projects precise, brightly colored lines (red or green) on industrial surfaces, clearly delineating pedestrian paths, forklift lanes, and hazard zones.

#### Long Lifespan & Continuous Operation

Built for long-term use with a 20,000-hour laser lifespan and continuous-duty microprocessor control for reliable performance.

#### Rugged Industrial Design

Solid, IP67-rated enclosure, the HaloPath withstands dust, moisture, vibration, and temperature extremes from -40°C to +40°C.

#### Flexible Mounting & Positioning

Includes an adjustable bracket for wall, ceiling, or structure mounting. Projection length is relative to the mounting height..

#### Low Maintenance & Reduced Downtime

Eliminates the need for frequent repainting or replacing worn tape, significantly reducing labor costs and downtime.

#### Energy Efficient & Safe

Operates on a 12-24V DC low-voltage input. No special safety goggles required.

#### Advanced Control & Integration

Features integrated motion sensors, heating control, and the ability to integrate with machinery or safety systems.

#### Custom Line Configuration

Adjustable line length, width, and projection angle (90° or 110°) for precision marking.

#### Warranty & Parts

Backed by a 2-year warranty, with OEM spare parts and replaceable laser modules available.

### Overview.

**The HaloPath Laser Projector is a powerful, maintenance-free solution for floor marking in demanding industrial environments.**

Replacing traditional painted or taped lines, it projects bright, precisely defined laser lines directly onto the floor – delivering maximum visibility even in high-traffic or abrasive areas. From forklift routes to warehouse walkways, HaloPath enhances safety, reduces downtime, and streamlines operations.

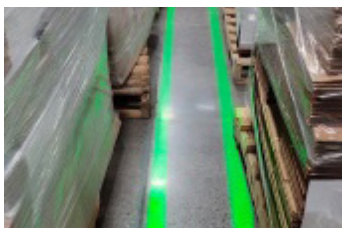
Unlike fixed markings, HaloPath can be repositioned as needs change – offering long-term savings and flexibility without the recurring cost of repainting or taping.

Built for logistics hubs, manufacturing sites, cold storage, and food-grade facilities, it's the ideal choice where conventional markings wear out or underperform.

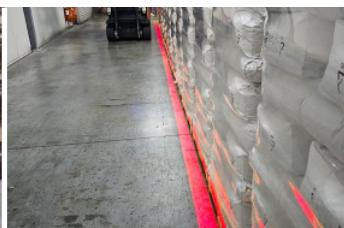
### Options.

 Green laser (530 nm)

 Red laser (638 nm)



Recommended for walkways



Recommended for exclusion zones

**VIEW ONLINE**



## SPECIFICATIONS

## HaloPath Laser Line Projector

49-HPLL

Precise rotation lock of the laser with knobs

Bracket ring

Locking knobs for laser shutter

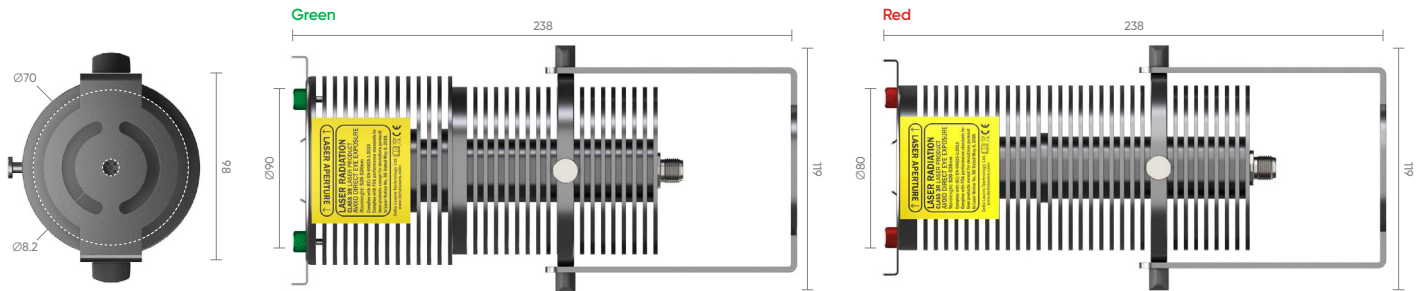
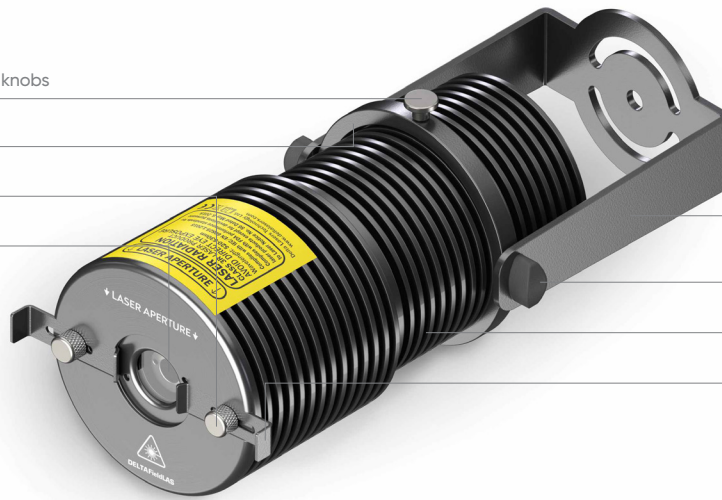
Laser Aperture

Mounting bracket (for ceiling or wall mount)

Adjustment knobs of the laser tilt (they clamp tight and prevent the laser from moving)

Aluminum body (black anodized)

Laser shutter (manual adjust the line length)



### Technical.

Laser class	2, 3R
Technology	Diode
Heating	(on-request)
PIR motion sensor	(on-request)
Operating conditions (temperature, °C)	-40 ~ +40

### Optical.

Projection Line Angle, °	90 – 110			
Focus	Fixed			
Line Length, m				
Opening Angle, °	90	90	110	110
Distance, m	5	10	5	10
Approx. Line Length, m	10	20	14	28.5
Line Width, mm				
Height, m	5	8	10	12
Line Width, mm	40	55	60	85
Note	Create longer lines with multiple units			

### Mechanical.

Dimensions, mm	Ø80 x 175±5
Net Weight, kg	1.8
Protection rating	IP67

### Electrical.

Input Voltage, V (DC)	12 – 24
Input Current, mA (max)	2000
Temperature Protection	Yes
Electrical Protection	Polarity reversal, overvoltage protection, overheating protection
Connection	M12, 4 pin Industrial connector, IP67
Power Cable	Supplied with 5m power cable
Power Supply Unit	
A	Plug and play Adapter 24V/36W
B	Switching Power Supply
Installation	By a registered electrician, arranged by client