

## SPECIFICATIONS

## TruckSafe Carpark Barriers

# TruckSafe Double Rail.

TruckSafe Barriers are an all-steel constructed modular barrier system designed to arrest vehicles in carpark areas.

VIEW ONLINE



Code	TSDR-1
Description	Double impact rail
Construction	Galvanised steel
Mounting	Surface mounted to concrete
Posts	Crumple Zone Technology
Compliance	AS/NZS 1170.1 – Type F 30kN and TypeG 40kN
Typical Uses	HD traffic • Carparks • Walkways Fall-from-height protection
Overall Height	1020mm





### Overview.

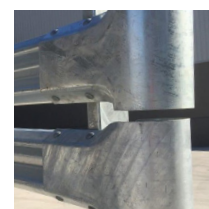
TruckSafe Double Rail is used to protect assets and pedestrian walkways from larger vehicles and vehicles travelling at higher speeds.

Crash-tested and certified to meet relevant car park barrier standards. The support posts are engineered to absorb vehicle impact energy, minimising force transfer to bolts and reducing the risk of concrete damage. Available in a range of configurations to suit your specific application.

### Options.

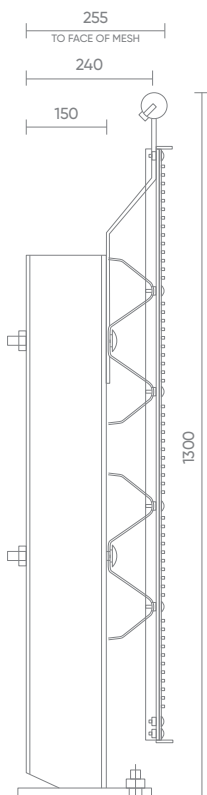
Available with a handrail and anti-climb mesh for anti-climb carpark barrier applications, **see Type 4 (TSDR-4)**.

Finish	 Galvanised Steel	 Powder-coated
End caps (below)	 Stumpy Bullnose	 Plastic Sleeve



#### Option Type 4 (TSDR-4)

Double impact rail with handrail and anti-climb mesh



#### Standard design

#### Type 1

