

TB 260 DOUBLE

SAFETY BARRIERS



PRODUCT SPECIFICATIONS

APPLICATION

| | |
|---------------------------|--|
| Environment | A double traffic barrier that closely resembles a guardrail which goes the extra mile in shielding pedestrians from vehicle collisions. The lower centre of gravity provides extra strength. |
| Impact performance at 90° | POST: 39800 Joule (Eq. to 10 ton - 10,2 km/h) |
| | RAIL: 46500 Joule (Eq. to 10 ton - 11,0 km/h) |

MATERIAL

| | |
|-----------------|---|
| Posts and rails | Extrilene® - UV resistant - Fire class E ^s - Non conductive - Impervious to most chemicals ^{**} |
| Caps | Sustainable elastomer |

STANDARD COLOURS

| | |
|-------------|-----------------|
| End post | Yellow RAL 1003 |
| Mid post | Yellow RAL 1003 |
| Impact tube | Yellow RAL 1003 |

BASEPLATES

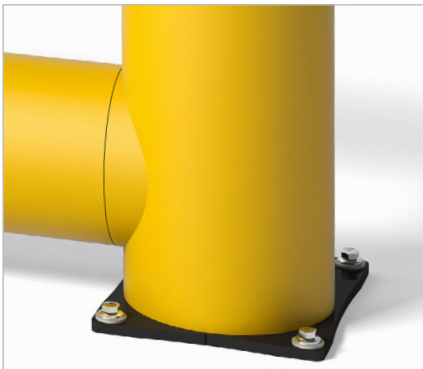
| | Steel | Zinc Coated Steel | Stainless steel |
|----------|------------------|--------------------------|-------------------------|
| Material | Steel 37 | Steel 37 | Stainless steel 304 |
| Coating | Lacquered | Electroplated + Laquered | No lacquer / No coating |
| Colour | High gloss black | Mat black | Natural colour |

*Classification according to EN 13501-1:2007 +A1:2009 - Fire classification of construction products and building elements.

**Ask your local sales office for resistance to specific chemicals.

FIXATIONS

| | | | ZC (Zinc coated) | SS (Stainless steel) |
|--------------|-----------------------|---|------------------------------|------------------------------|
| STANDARD | Wedge anchor |  | Ø18mm (M12) x 130mm | Ø18mm (M12) x 130mm |
| | Anchor rod (Chemical) |  | M16 x 120mm + Chemical resin | M16 x 120mm + Chemical resin |
| ALTERNATIVES | Concrete screw |  | Ø17mm x 130mm | Not available |



Distributed in
NZ & AU by



NZ vanguardgroup.co.nz • 0800 500 147 • hello@vanguardgroup.co.nz

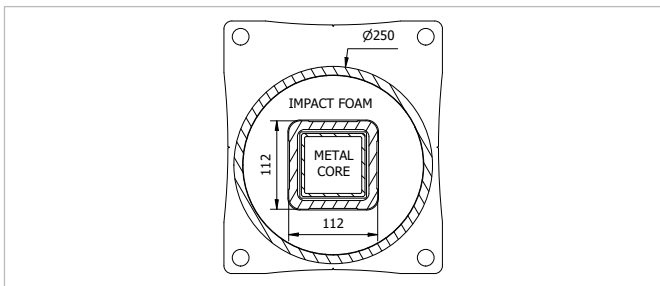
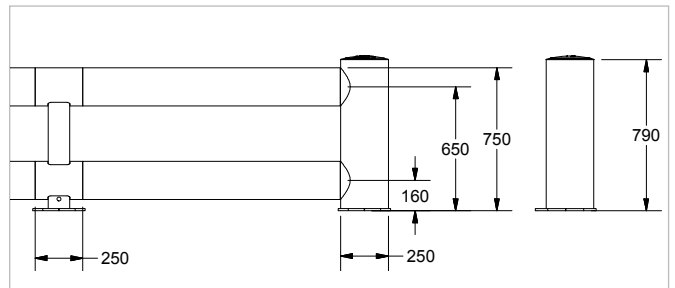
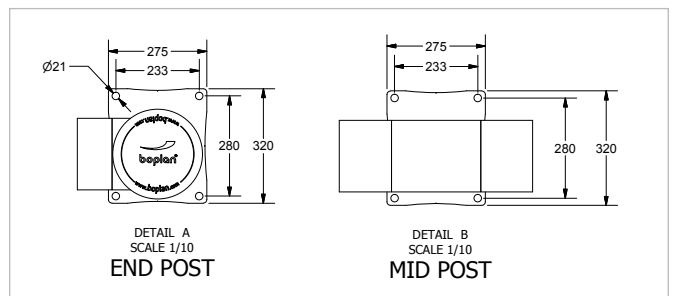
AU vanguardaustralia.com.au • 1800 999 243 • hello@vgl.net.au

FEATURES AND FUNCTIONALITY - TB 260 DOUBLE

| SIZE | |
|---------------------------|---|
| Height end posts | 790 mm |
| Height mid post | 750 mm |
| Profile section tubes | Ø200 mm (11 mm thick) |
| Profile section end posts | Outer tube: Ø250 mm (11 mm thick) Inner profile: 112 mm x 112 mm (10 mm thick) |
| Profile section mid posts | Profile: 112 mm x 112 mm (10 mm thick) |
| Standard rail length | 1350 mm (other sizes: 750 mm - 1750 mm) |
| Baseplate | End Post: 275 mm x 320 mm (12mm thick) Mid Post: 275 mm x 320 mm (12mm thick) |

| REQUIREMENTS | |
|---|---|
| Concrete quality | minimum C25/30 |
| Concrete floor plate thickness | minimum 150 mm |
| Concrete slab dimension around posts (mm) | 800 (h) x 800 (w) x 600 (d) |
| Operational temperature | -10°C up to +40°C |
| Water and humidity | Steel (standard): dry indoor use only. Zinc coated: outdoor use in most environments. Stainless Steel: outdoor use or frequent exposure to water and humidity. |

| boplan | | |
|--|---|--|
| IMPACT LABEL FOR SAFETY BARRIERS | | |
| BOPLAN TB 260 Double | | |
| IMPACT RATING | 45° | 90° |
| E80 > 80 kJ | | |
| E60 > 60 kJ | 65,7 kJ | |
| E50 > 50 kJ | | |
| E40 > 40 kJ | | 46,5 kJ |
| E35 > 35 kJ | | |
| E30 > 30 kJ | | |
| E25 > 25 kJ | | |
| E20 > 20 kJ | | |
| E15 > 15 kJ | | |
| E10 > 10 kJ | | |
| E5 > 5,0 kJ | | |
| E2 > 2,5 kJ | | |
| TEST CONDITIONS TEMPERATURE: 20°C / 68°F IMPACT HEIGHT: 650 mm / 25 2/3 Inch IMPACT ANGLE: 90° TEST FLOOR: CONCRETE SLAB C25/30 - 160 mm / 6 Inch MANUFACTURER ANCHOR PULL OUT: 17kN | TEST VEHICLE WEIGHT: 2300 KG / 5070.63 lbs TYPE: COMMERCIAL FORK LIFT SIZE (L x W x h): 1890x1020x1970 mm / 74x40x78 Inch CONTACT AREA: STEEL BUMPER WIDTH: 600 mm / 24 Inch | ACCREDITED TEST LABORATORY 620 Route des Fromentaux 01500 Saint-Maurice-de-Rémens 01360 Bèlignieux France |
| SUCCESS CRITERIA VEHICLE STOPPED - ASI (ACCELERATION SEVERITY INDEX) <0.5 | IL-DT260-20230710 | |



Distributed in
NZ & AU by



NZ vanguardgroup.co.nz • 0800 500 147 • hello@vanguardgroup.co.nz

AU vanguardaustralia.com.au • 1800 999 243 • hello@vgl.net.au

REFERENCE LIST - TB 260 DOUBLE

POSTS

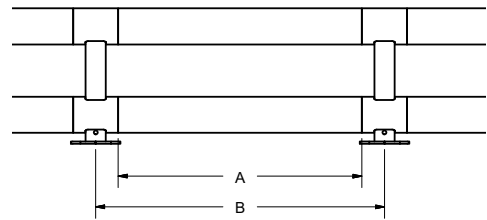
| | | |
|--|---|---|
| End post Left End post Left - ZC End post Left - SS | DT2600-0001-EPLYE DT2600-0001-EPLYEZ DT2600-0001-EPLYES |  |
| End post Right End post Right - ZC End post Right - SS | DT2600-0001-EPRYE DT2600-0001-EPRYEZ DT2600-0001-EPRYES |  |
| Mid post Mid post - ZC Mid post - SS | DT2600-0001-MPYE DT2600-0001-MPYEZ DT2600-0001-MPYES |  |

CURVES

| | | |
|--|--------------------|---|
| Conn.tube Ø200 Curve 350mm - YE | DT2600-0350-C200YE |  |
| Conn.tube Ø200 - 45° Curve 350mm - YE | DT2600-0350-C204YE |  |
| Conn.tube Ø200 - 90° Curve 350mm - YE | DT2600-0350-C209YE |  |
| Conn.tube Ø250 Curve 350mm - YE | DT2600-0350-C250YE |  |
| Conn.tube Ø250 - 90° Curve 350mm - YE | DT2600-0350-C259YE |  |

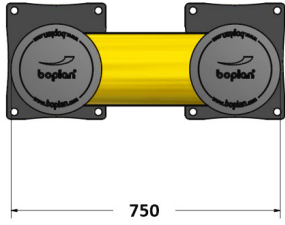
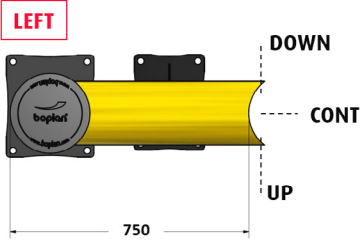
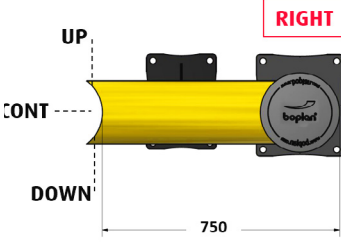
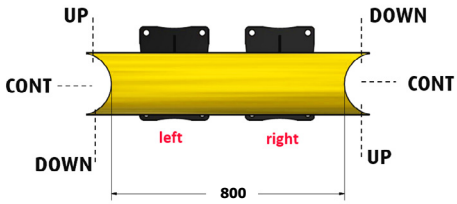
RAIL SETS

| | Tube length (A) | CC length (B) | Reference |
|---------------|-----------------|---------------|--------------------|
| Standard rail | 750 mm | 1000 mm | DT2600-0750-1000YE |
| Standard rail | 950 mm | 1200 mm | DT2600-0950-1200YE |
| Standard rail | 1150 mm | 1400 mm | DT2600-1150-1400YE |
| Standard rail | 1350 mm | 1600 mm | DT2600-1350-1600YE |
| Standard rail | 1550 mm | 1800 mm* | DT2600-1550-1800YE |
| Standard rail | 1750 mm | 2000 mm* | DT2600-1750-2000YE |
| Short rail | 600-1349 mm | 850-1599 mm | DT2609-1599-SRYE |
| Long rail | 1351-1749 mm | 1601-2000 mm* | DT2609-2000-LRYE |



* The impact performance has not been tested for tube lengths > 1600 mm.
Only use these lengths for non - critical applications.

REFERENCE LIST - TB 260 DOUBLE

| FIXED UNITS | | TYPE | LENGTH | BASE | REFERENCE YE | |
|-------------|---------------|-------------|-------------------|---|--|--|
| no curves | na | 750 mm | Steel ZC SS | DT2600-0750-FUYE DT2600-0750-FUYEZ DT2600-0750-FUYES |  | |
| | | 751-1750 mm | Steel ZC SS | DT2601-1750-FUYE DT2601-1750-FUYEZ DT2601-1750-FUYES | | |
| 1 curve | Endpost LEFT | 750 mm | Steel ZC SS | DT2600-0750-FU1CLYE DT2600-0750-FU1CLYEZ DT2600-0750-FU1CLYES |  | |
| | | 751-1750 mm | Steel ZC SS | DT2601-1750-FU1CLYE DT2601-1750-FU1CLYEZ DT2601-1750-FU1CLYES | | |
| | Endpost RIGHT | 750 mm | Steel ZC SS | DT2600-0750-FU1CRYE DT2600-0750-FU1CRYEZ DT2600-0750-FU1CRYES |  | |
| | | 751-1750 mm | Steel ZC SS | DT2601-1750-FU1CRYE DT2601-1750-FU1CRYEZ DT2601-1750-FU1CRYES | | |
| 2 curves | na | 800 mm | Steel ZC SS | DT2600-0800-FU2CYE DT2600-0800-FU2CYEZ DT2600-0800-FU2CYES |  | |
| | | 801-1750 mm | Steel ZC SS | DT2601-1750-FU2CYE DT2601-1750-FU2CYEZ DT2601-1750-FU2CYES | | |